

Pigeon Hill Conservation Area

Ten-Year Area Management Plan
2017-2026





Wildlife Division Chief



Date

Pigeon Hill Conservation Area Management Plan Approval Page

PLANNING TEAM

Sean Cleary, Wildlife Management Biologist

Eric Dennis, Fisheries Management Biologist

Lonnie Messbarger, Resource Forester

Steve Buback, Natural History Biologist

Dave Carlisle, Conservation Agent

Jeff Powelson, Private Land Conservationist

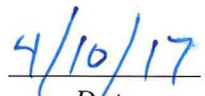
Tim Miller, Outdoor Skills Specialist

NORTHWEST REGION

RCT Chair



Signature



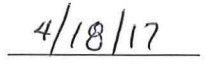
Date

WILDLIFE DIVISION

Wildlife Management Chief



Signature



Date

OVERVIEW

- **Official Area Name:** Pigeon Hill Conservation Area, #6304
- **Year of Initial Acquisition:** 1967
- **Acreage:** 424 acres
- **County:** Buchanan
- **Division with Administrative Responsibility:** Wildlife
- **Division with Maintenance Responsibility:** Wildlife
- **Statements of Purpose:**
 - A. Strategic Direction**

The purpose of this area is to provide quality deer and turkey hunting, recreational shooting, and wildlife viewing opportunities through sound management of woodland and forest habitats.
 - B. Desired Future Condition**

Maintain a healthy and sustainable woodland and forest complex along with existing open land areas. Continue to provide compatible recreational opportunities.
 - C. Federal Aid Statement**

This area, or a portion thereof, was acquired with Pittman-Robertson Wildlife Restoration funds to restore and manage wildlife, conserve and restore suitable wildlife habitat, and provide public access for hunting or other wildlife-oriented recreation.

GENERAL INFORMATION AND CONDITIONS

- I. **Special Considerations**
 - A. **Priority Areas:** None
 - B. **Natural Areas:** None

- II. **Important Natural Features and Resources**
 - A. **Species of Conservation Concern:** None observed.
 - B. **Caves:** None
 - C. **Springs:** None
 - D. **Other:** The woodland community on the area (4.5 acres) is a Dry-Mesic Loess/Glacial Till Woodland (Figure 5). This community is found in the dissected plains on mid and upper slopes and ridges. Slopes are gentle to strong (3-16 percent), typically with south- and west-facing aspects. Soils are well to somewhat excessively drained and deep (40->60 inches) with a moderately acidic to slightly alkaline soil reaction (5.6-7.8). They formed in loess, glacial till, loess over glacial till or till over residuum weathered from bedrock. Soils are dominated by silt loams when formed in loess, and silt loams and clay loams when

developed in glacial till or residuum. These soils overlay Cambrian, Ordovician, Devonian, Silurian, Pennsylvanian, and Mississippian age formations (Nelson, 2010).

III. Existing Infrastructure

- Archery shooting range (Americans with Disabilities Act [ADA] accessible)
- Rifle shooting range
- Shotgun shooting range
- Special use shooting range
- Five fishless ponds (3 acres total)
- Four parking lots, two are ADA accessible
- Two privies, ADA accessible
- 1.5 miles of interior field access roads suitable for hiking.
- Maintenance shop
- Radio tower

IV. Area Restrictions or Limitations

- A. Deed Restrictions or Ownership Considerations:** None
- B. Federal Interest Conditions/Restrictions:** Use of land acquired with federal funds may not interfere with the purpose for which it was acquired. Federal funds may also be used in the management of this land. Fish and wildlife agencies may not allow recreational activities and related facilities that would interfere with the purpose for which the State is managing the land. Other uses may be acceptable and must be assessed in each specific situation.
- C. Easements:** Public road rights of way, Rockies Express Pipeline LLC, Platte Pipeline
- D. Cultural Resource Findings:** No known cultural resources.
- E. Endangered Species:** None observed.
- F. Boundary Issues:** None

MANAGEMENT CONSIDERATIONS

V. Terrestrial Resource Management Considerations

Challenges and Opportunities:

- 1) Enhance quality deer and turkey populations.
- 2) Enhance the diverse mixture of quality native vegetation.
- 3) Enhance the woodland and forest habitat.

Management Objective 1: Manage for quality deer and turkey populations.

Strategy 1: Provide diverse habitat including native food types. (Wildlife)

Strategy 2: Manage for a diverse mixture of native vegetation and agricultural food sources. (Wildlife)

Management Objective 2: Implement annual disturbances to establish and maintain native vegetation.

Strategy 1: Implement agricultural practices for disturbance and forage variety. (Wildlife)

Strategy 2: Treat invasive and noxious vegetation with herbicides and mechanical treatments. (Wildlife)

Management Objective 3: Manage for a healthy and sustainable mixture of woodland and forest habitats.

Strategy 1: Monitor woodlands and forests for a sustainable community and provide habitat for native wildlife. (Wildlife)

Strategy 2: Monitor invasive vegetation, diseases, and insects. Treat undesirable vegetation and pests to control their spread. (Wildlife)

VI. Aquatic Resource Management Considerations

Challenges and Opportunities:

- 1) Manage riparian corridor.

Management Objective 1: Manage a healthy and sustainable riparian corridor along the 0.8 miles of Pigeon Creek.

Strategy 1: Maintain current riparian buffer on Pigeon Creek, with a goal of retaining the existing 100 feet. (Wildlife)

VII. Public Use Management Considerations

Challenges and Opportunities:

- 1) Provide quality infrastructure and regulations for the public to access outdoor recreational opportunities, including hunting, hiking, and viewing. Maintain shooting opportunities on a high-use shooting range complex with a diverse user group.

Management Objective 1: Maintain infrastructure, regulations, and Atlas database to provide access and inform the public of area resources and recreational opportunities.

Strategy 1: Monitor and evaluate infrastructure, regulations, and Atlas database annually. (Wildlife)

Strategy 2: Maintain area infrastructure and signage. (Wildlife)

Strategy 3: Maintain access to area. (Wildlife)

VIII. Administrative Considerations

Challenges and Opportunities:

- 1) Maintain area infrastructure at current levels.
- 2) Consider acquisition of land, when available.

Management Objective 1: Maintain area infrastructure at current levels.

Strategy 1: Maintain area infrastructure in accordance with Missouri Department of Conservation (Department) guidelines. (Wildlife)

Lands Proposed for Acquisition:

When available, adjacent land may be considered for acquisition from willing sellers. Tracts that improve area access, provide public use opportunities, contain unique natural communities, and/or species of conservation concern, or meet other Department priorities, as identified in the annual Department land acquisition priorities, may be considered.

MANAGEMENT TIMETABLE

All strategies for this management plan are considered ongoing.

APPENDICES

Area Background:

Pigeon Hill Conservation Area (CA) is located approximately 8 miles south of St. Joseph and 45 miles north of Kansas City in Buchanan County.

Pigeon Hill CA was purchased by the Missouri Department of Conservation in 1967, in part, with funds derived through the Pittman-Robertson Wildlife Restoration Act, administered by the U.S. Fish and Wildlife Service.

Currently a small portion of the area is farmed to complement more intensive habitat development such as forest thinning, invasive species treatments, and timber management.

Approximately 85 percent of Pigeon Hill CA is covered in trees (mixed oak-hickory). The remaining acres are old fields, shooting ranges, area roads, open fields, and watering holes.

Current Land and Water Types:

Land/Water Type	Acres	Miles	% of Area
Forest/Woodland	362		85
Open Lands	22		5
Old Field	20		5
Other (roads and parking lots)	20		5
Total	424		100
Stream Frontage – Pigeon Creek		0.8	

Public Input Summary:

The draft Pigeon Hill Conservation Area Management Plan was available for a public comment period Oct. 1–31, 2016. The Missouri Department of Conservation received comments from one respondent (Appendix A). The Pigeon Hill Conservation Area Planning Team carefully reviewed and considered these ideas as they finalized this document. A brief summary of public input themes, including how they were incorporated or why they were not, can be found below. Rather than respond to each individual comment, comments are grouped into general themes and are addressed collectively.

Department responses to themes and issues identified through the Pigeon Hill Conservation Area Management Plan public comment period.

Suggests adding multi-use (hiking/horseback riding) trails.

Adding multi-use trails for horseback riding would not be compatible with the four shooting ranges located on Pigeon Hill CA. The shooting ranges get on average 20,000 vehicles per year. Horseback riders can pursue this recreational opportunity on Honey Creek CA (37 miles away), Riverbreaks CA (47 miles away), Clay County Parks Smithville Lake (24 miles away), and

Bonanza CA (58 miles away). There currently is an area access trail which is open to hiking and is approximately 2 miles long.

References:

Nelson, P. W. (2010). *The terrestrial natural communities of Missouri*. Jefferson City, MO: Missouri Department of Conservation.

Maps:

Figure 1: Area Map

Figure 2: Pipeline Easements Map

Figure 3: Current Land Cover Map

Figure 4: Map of Shooting Ranges

Figure 5: Mesic Loess/Glacial Till Woodland Map

Additional Appendices:

Appendix A. Pigeon Hill Conservation Area Public Comments

Figure 1: Area Map

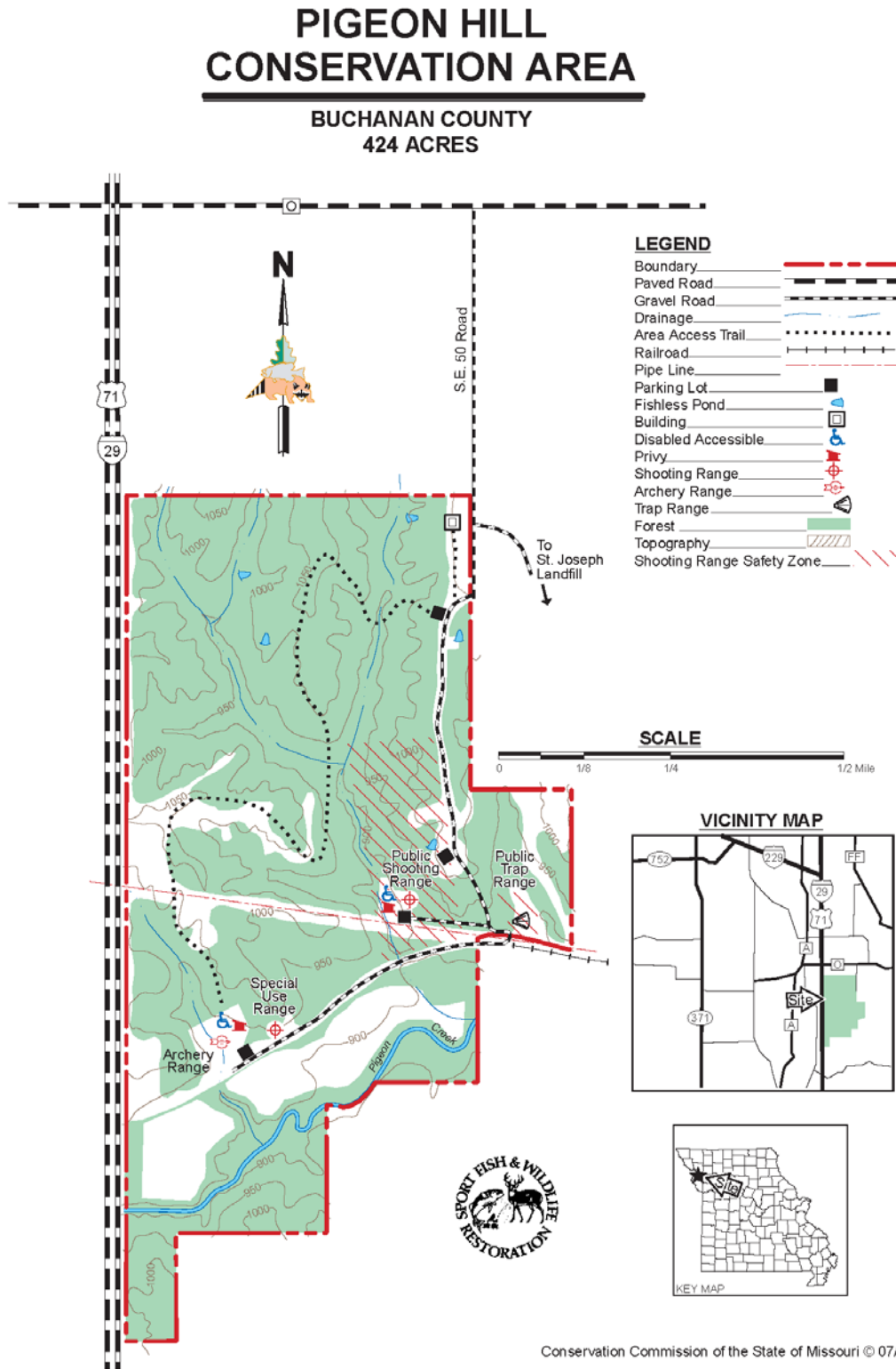


Figure 2: Pipeline Easements Map



Figure 3: Current Land Cover Map

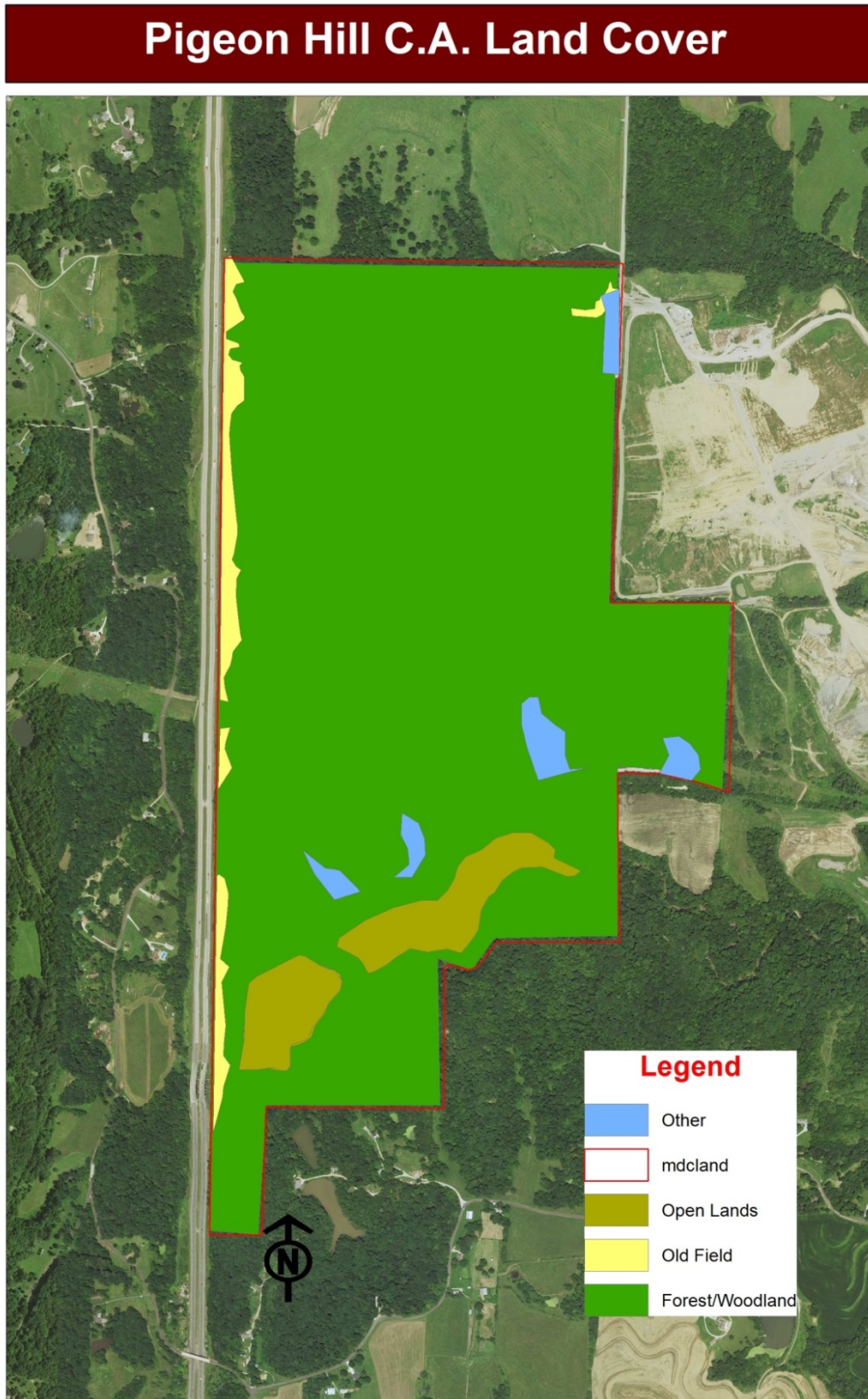


Figure 4: Map of Shooting Ranges

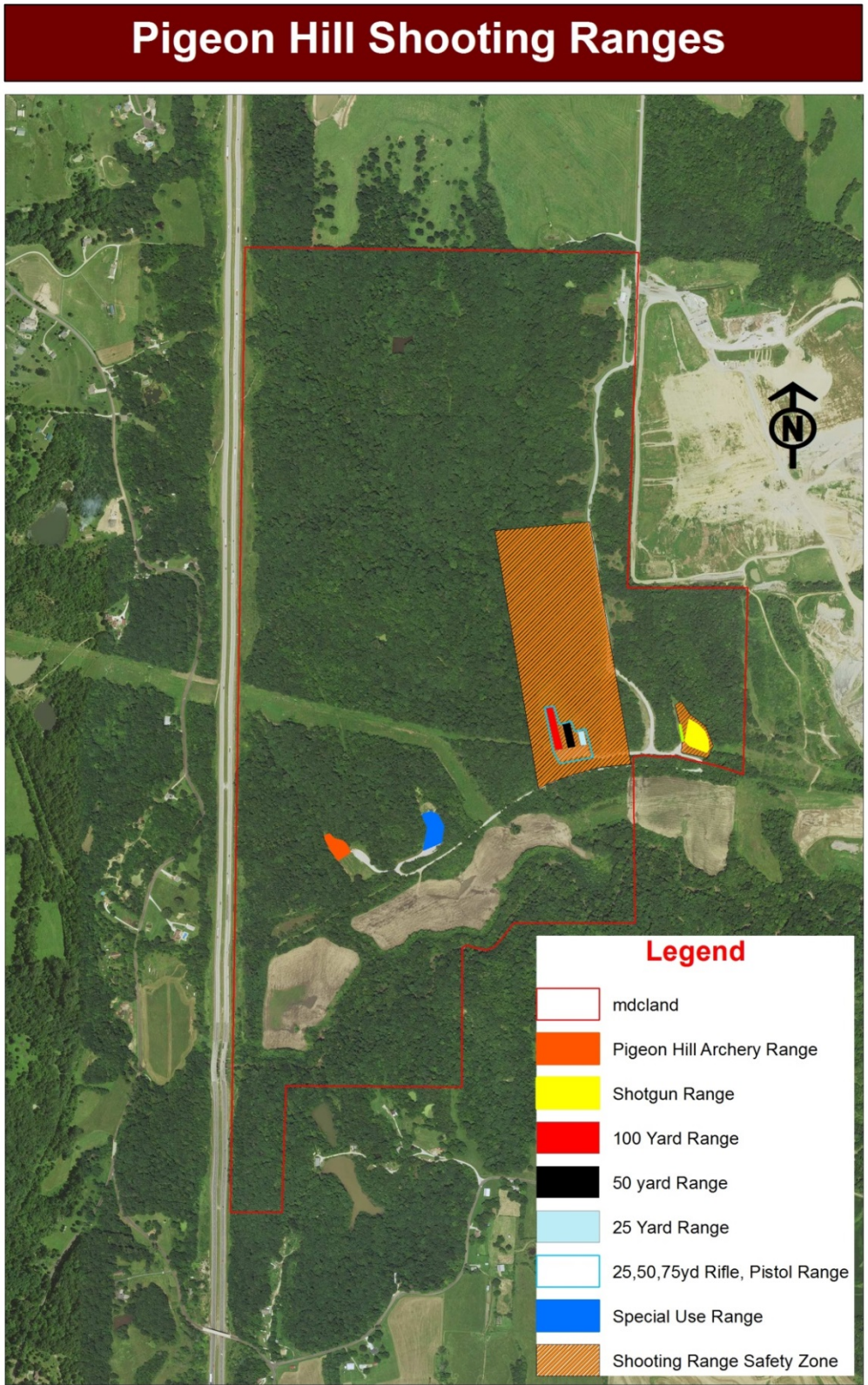


Figure 5: Dry-Mesic Loess/Glacial Till Woodland Map



Appendix A. Pigeon Hill Conservation Area Management Plan Public Comments

Received during public comment period (Oct. 1-31, 2016):

Please include more hiking / equestrian trails in all possible management plans. Thank you.