

# Northwest Region Grand River Accesses

Andy Denton Access, Bosworth Access, Coval Gann - Chillicothe Access,  
Green Access, Holmes Bend Access, Mockingbird Hill Access,  
Newman Memorial Access, Savage Access, Sowards Ford Access,  
Sumner Access, Wabash Crossing Access

## Twenty-Year Area Management Plan FY 2018-2037



  
Fisheries Division Chief

12-14-17  
Date

  
Wildlife Division Chief

1/18/18  
Date

## Northwest Grand River Accesses Area Management Plan Approval Page

### PLANNING TEAM

Jerry Wiechman, Fisheries Management Biologist

Greg Pitchford, Fisheries Management Biologist

Matt Engel, Fisheries Management Biologist

Chris Freeman, Wildlife Management Biologist

Brian Gilbert, Wildlife Management Biologist

Dave Hoover, Wildlife Management Biologist

Alan Bradford, Conservation Agent

Brandon Lyddon, Conservation Agent

Clay Creech, Conservation Agent

Jacob Strozewski, Conservation Agent

Jeff Berti, Conservation Agent

Marc Bagley, Conservation Agent

### NORTHWEST REGION

RCT Chair

Kevin W. Whitman 11/16/17  
Signature Date

### FISHERIES DIVISION

Fisheries Field Operation Chief

Pct D Cohn 12/15/17  
Signature Date

### WILDLIFE DIVISION

Wildlife Management Chief

Michael D. Schwan 12/15/17  
Signature Date

**OVERVIEW**

<b>Area Name</b>	<b>Area Number</b>	<b>Year Acquired</b>	<b>Acres</b>	<b>County</b>	<b>Administrative Responsibility</b>	<b>Maintenance Responsibility</b>
Andy Denton Access	7715	1977	121	Gentry	Wildlife	Wildlife
Bosworth Access	6218	1962	7	Carroll	Fisheries	Forestry
Coval Gann - Chillicothe Access	8518	1985 <sup>1</sup>	7	Livingston	Fisheries	Wildlife
Green Access	6914	1969	3	Daviess	Fisheries	Wildlife
Holmes Bend Access	7704	1977	76	Daviess	Wildlife	Wildlife
Mockingbird Hill Access	200004	2000	80	Grundy	Wildlife	Wildlife
Newman Memorial Access	8133	1981	9	Daviess	Fisheries	Wildlife
Savage Access	7816	1978	13	Daviess	Fisheries	Wildlife
Sowards Ford Access	8433	1984	51	Worth	Wildlife	Wildlife
Sumner Access	9233	1992	2	Chariton	Fisheries	Forestry
Wabash Crossing Access	6909	1969	15	Daviess	Fisheries	Wildlife

<sup>1</sup>This area is owned by the City of Chillicothe and leased to the Department since 1985.

**Statements of Purpose:**

**A. Strategic Direction**

The purpose of this plan is to coordinate multidivisional activities and maximize the effectiveness of our management efforts to benefit the fish, forest, wildlife, and public use resources of the Grand River accesses in northwest Missouri.

**B. Desired Future Condition**

These accesses should be managed to maximize sustainable levels of recreational uses while protecting the natural features and serving as examples of good stewardship.

**C. Federal Aid Statement**

- Andy Denton, Bosworth, Coval Gann – Chillicothe, Green, Holmes Bend, Mockingbird Hill, Newman Memorial, Savage, Sowards Ford, Sumner accesses: N/A
- Wabash Crossing Access: This area, or a portion thereof, was acquired with Land and Water Conservation Fund dollars to provide land or facilities for public outdoor recreation.

## GENERAL INFORMATION AND CONDITIONS

### I. Special Considerations

Area Name	Priority Areas	Natural Areas
Andy Denton Access	None	None
Bosworth Access	Lower Grand River – Grassland/Prairie/Savanna Conservation Opportunity Area, Lower Grand River Wetland Conservation Opportunity Area	None
Coval Gann - Chillicothe Access	Lower Grand River – Grassland/Prairie/Savanna Conservation Opportunity Area, Lower Grand River Wetland Conservation Opportunity Area	None
Green Access	None	None
Holmes Bend Access	None	None
Mockingbird Hill Access	None	None
Newman Memorial Access	None	None
Savage Access	None	None
Sowards Ford Access	None	None
Sumner Access	Lower Grand River – Grassland/Prairie/Savanna Conservation Opportunity Area, Lower Grand River Wetland Conservation Opportunity Area	None
Wabash Crossing Access	None	None

### II. Important Natural Features and Resources

Area Name	Species of Conservation Concern	Caves	Springs
Andy Denton Access	None observed	None	None
Bosworth Access	Yes <sup>1</sup>	None	None
Coval Gann - Chillicothe Access	Yes <sup>1</sup>	None	None
Green Access	None observed	None	None
Holmes Bend Access	None observed	None	None
Mockingbird Hill Access	None observed	None	None
Newman Memorial Access	None observed	None	None
Savage Access	None observed	None	None
Sowards Ford Access	None observed	None	None
Sumner Access	Yes <sup>1</sup>	None	None
Wabash Crossing Access	Yes <sup>1</sup>	None	None

<sup>1</sup>Species of conservation concern are known from this area. Area managers should consult the Natural Heritage Database annually and review all management activities with the natural history biologist.

**III. Existing Infrastructure**

<b>Area Name</b>	<b>Concrete Ramp</b>	<b>Privy</b>	<b>Parking Areas</b>	<b>Other</b>
Andy Denton Access	None	None	2	2 campsites
Bosworth Access	1	1 <sup>1</sup>	1 <sup>1</sup>	1 campsite
Coval Gann - Chillicothe Access	1	1 <sup>1</sup>	1 <sup>1</sup>	N/A
Green Access	None	None	1	N/A
Holmes Bend Access	None	None	2	1 campsite, 0.2-acre fishless pond
Mockingbird Hill Access	None	None	1	N/A
Newman Memorial Access	None	None	1	N/A
Savage Access	None	None	1	N/A
Sowards Ford Access	1	1	1	10 campsites, 10 picnic tables
Sumner Access	1	None	1	N/A
Wabash Crossing Access	1	None	1	N/A

<sup>1</sup>Americans with Disabilities Act (ADA) accessible

**IV. Restrictions or Limitations**

<b>Area Name</b>	<b>Deed Restrictions</b>	<b>Federal Interest</b>	<b>Ease-ments</b>	<b>Cultural Resources</b>	<b>Endan-gered Species</b>	<b>Boundary Issues</b>
Andy Denton Access	None	Yes <sup>2</sup>	None	None	None observed	None
Bosworth Access	None	Yes <sup>2</sup>	None	None	None observed	None
Coval Gann - Chillicothe Access	Leased <sup>1</sup>	Yes <sup>3</sup>	None	None	Yes <sup>5</sup>	None
Green Access	None	Yes <sup>2</sup>	None	None	None observed	None
Holmes Bend Access	None	Yes <sup>2</sup>	None	None	None observed	None
Mockingbird Hill Access	None	Yes <sup>2</sup>	None	None	None observed	None
Newman Memorial Access	None	Yes <sup>2</sup>	None	None	None observed	None
Savage Access	None	Yes <sup>2</sup>	None	None	None observed	None
Sowards Ford Access	None	Yes <sup>2</sup>	None	None	None observed	None
Sumner Access	None	Yes <sup>2</sup>	None	None	None observed	None
Wabash Crossing Access	None	Yes <sup>3,4</sup>	None	None	None observed	None

<sup>1</sup>This access is owned by the City of Chillicothe and managed by the Department under a cooperative agreement since 1985.

<sup>2</sup>Federal funds may be used in the management of this land. Fish and wildlife agencies may not allow recreational activities and related facilities that would interfere with the purpose for which the State is managing the land. Other uses may be acceptable and must be assessed in each specific situation.

<sup>3</sup>Federal funds (Sport Fish Restoration) were used in the development of this area, or a portion thereof. The Department must maintain the developed project throughout its useful life. Federal funds may also be used in the management of this land. Fish and wildlife agencies may not allow recreational activities and related facilities that would interfere with the purpose for which the State is managing the land. Other uses may be acceptable and must be assessed in each specific situation.

<sup>4</sup>This land must provide land/facilities for public outdoor recreation in perpetuity. Federal funds may also be used in the management of this land. Fish and wildlife agencies may not allow recreational activities and related facilities that would interfere with the purpose for which the State is managing the land. Other uses may be acceptable and must be assessed in each specific situation.

<sup>5</sup>Endangered species are known from this area. Area managers should consult the Natural Heritage Database annually and review all management activities with the natural history biologist.

## **MANAGEMENT CONSIDERATIONS**

### **V. Terrestrial Resource Management Considerations**

Seven of 11 access areas in this plan are less than 20 acres and are managed to provide bank and boat access to the Grand River with minimal impacts to stream bank stability. Some of these areas contain wooded riparian areas that provide important ecosystem functions (e.g., wildlife habitat, flood abatement) while also providing some limited recreational opportunities (wildlife viewing, etc.) for area users.

Four of the accesses (Andy Denton, Holmes Bend, Mockingbird Hill, and Sowards Ford) are large enough areas (more than 50 acres) to warrant managing them for riparian woodlands, wetlands, or upland habitats and their appropriate recreational uses. These uses may include hunting, camping, day-use gatherings, and expanded wildlife viewing opportunities.

Due to differences among areas, management considerations are grouped by small (less than 20 acres) and large (more than 50 acres) access areas.

**Small Access Areas (less than 20 acres)**

**Challenges and Opportunities:**

- 1) Reduce loss of riparian corridor due to bank erosion.
- 2) Remove undesirable herbaceous and woody plants.

**Management Objective 1:** Provide safe and convenient stream access by maintaining wooded riparian corridors to stabilize banks and lessen impacts from floods.

**Strategy 1:** Maintain a forested riparian corridor through natural regeneration or planting as needed. A riparian corridor of at least 100 feet in width should be established or maintained at all locations. (Fisheries)

**Strategy 2:** Riparian corridors should be inspected no less than every three years to determine necessary maintenance. (Fisheries)

**Management Objective 2:** Remove invasive plants.

**Strategy 1:** Reduce or eradicate invasive plants and undesirable woody plants, as they are detected. (Fisheries)

**Large Access Areas (more than 50 acres)**

**Challenges and Opportunities:**

- 1) Provide safe and convenient stream access by maintaining wooded riparian corridors to stabilize banks and lessen impacts from floods. (Fisheries)
- 2) Promote early successional habitat in open grasslands and old fields. (Wildlife)

**Management Objective 1:** Establish or maintain forested riparian corridors on all accesses.

**Strategy 1:** Maintain a forested riparian corridor through natural regeneration or planting, as needed. A riparian corridor of at least 100 feet in width should be established or maintained at all locations. (Fisheries)

**Strategy 2:** Riparian corridors should be inspected no less than every three years to determine necessary maintenance. (Fisheries)

**Management Objective 2:** Maintain open lands to be productive for wildlife and control or reduce invasive species and undesirable woody plants.

**Strategy 1:** Maintain grassland/old field habitats in various successional stages using a combination of management techniques, including, but not limited to, prescribed burning, mechanical tree removal, disking, mowing, and over-seeding. (Wildlife)

**Strategy 2:** Monitor and reduce or eradicate invasive plants and undesirable woody plants. (Wildlife)

## VI. Aquatic Resource Management Considerations

### **Challenges and Opportunities:**

- 1) Manage riparian corridors for effective flood damage abatement and formation of appropriate river meanders.
- 2) Minimize extensive bank erosion.
- 3) Reduce high sediment loading (bedloads) and excessive nutrient enrichment.
- 4) Minimize invasive species (e.g., Asian carp, zebra mussel).

**Management Objective 1:** Create and enhance aquatic habitat diversity for fish and wildlife along the Grand River.

**Strategy 1:** Maintain or establish 100-foot or wider riparian buffers along waterways on Missouri Department of Conservation (Department) accesses. (Fisheries)

**Strategy 2:** When appropriate or necessary, revegetate disturbed ground with native trees or other native vegetation. (Fisheries)

**Strategy 3:** When appropriate, stabilize stream banks and minimize bedload deposition by using best management practices (e.g., rip-rap, revetment, hard points, dikes, grade control structures, etc.). (Fisheries)

**Management Objective 2:** Promote the conservation and management of all native aquatic species along the Grand River.

**Strategy 1:** Monitor native aquatic species to determine status. (Fisheries)

**Strategy 2:** As warranted, implement appropriate management strategies to restore, enhance, or sustain populations for species of conservation concern. (Fisheries)

**Strategy 3:** Use local media to increase awareness and appreciation for the diversity of aquatic resources associated with Department accesses and the Grand River. (Fisheries)

**Strategy 4:** Use local media to increase awareness of the threat posed to aquatic resources from invasive species. (Fisheries)

**Management Objective 3:** Improve angler access and fishing success at Northwest Region accesses.

**Strategy 1:** Where reasonable and cost-effective, improve habitat diversity and bank-fishing access with structures that serve to protect or stabilize riverbanks (e.g., bank sloping, rock hardpoints, rip-rap). (Fisheries)



## VII. Public Use Management Considerations

### **Challenges and Opportunities:**

- 1) Maintain clean, safe, and user-friendly accesses for public use.
- 2) Maintain quality public area experiences.
- 3) Where appropriate on larger accesses, accommodate a variety of natural resource uses.
- 4) Reduce vandalism.
- 5) Manage user conflicts.
- 6) Conduct area maintenance associated with flood events.

**Management Objective 1:** Improve and/or expand infrastructure at access areas, where appropriate. Improvements should be considered primarily where topography, sheltering structures, and necessary roads would provide protection during flood events.

**Strategy 1:** Where needed, appropriate and/or practical, improve, maintain, and/or expand interior roads and parking lots. (Design and Development)

**Strategy 2:** Where practical, consider the addition of trails, privies, camp sites, disabled-user accessible facilities, etc. (Fisheries)

**Management Objective 2:** Foster good public stewardship by maintaining a clean, safe, and inviting environment for area users.

**Strategy 1:** Maintain boat ramps, parking/camping areas, facilities, roads and road sides through cleaning, mowing, trash removal, and gravel maintenance as needed. (Forestry, Wildlife, and Design and Development)

**Strategy 2:** Conduct frequent maintenance during high use periods and as needed during low use periods. (Forestry, Wildlife, and Design and Development)

**Strategy 3:** Install and/or maintain area property boundary signs as needed. (Fisheries)

**Strategy 4:** Install and/or maintain signs on roadways leading to the area as needed. (Forestry, Wildlife)

**Strategy 5:** Promote Adopt-an-Access to increase public appreciation, local pride, and reporting of access issues to the Department. (Fisheries)

**Management Objective 3:** Establish regulations for multiple uses while ensuring quality experiences, public safety, resource protection, and acceptable user impact.

**Strategy 1:** Adjust area regulations, as appropriate, and provide consistency, when possible, for hunting and fishing methods as well as other area uses. (All Divisions)

**Strategy 2:** Provide clear and appropriate signing and information to convey area regulations, permitted activities, opportunities, and limitations while providing clarity for enforcement authority. (Fisheries)

**Strategy 3:** Provide adequate enforcement for illicit activities like vandalism, litter, fish and wildlife code violations, off-road use by vehicles, etc. (Protection)

**Strategy 4:** Promote multiple-use opportunities available at the accesses. (Fisheries, Wildlife)

**Strategy 5:** Provide the public with area brochures, website links, and other area-related information when requested. (Fisheries)

**Management Objective 4:** Reduce vandalism and user conflicts at area accesses.

**Strategy 1:** Monitor on access usage. Encourage open and timely communication between staffs from resource divisions, conservation agents, and the public concerning observed activities of users. (Fisheries)

**Strategy 2:** Determine and implement the best methods to deter vandalism. If necessary, conduct patrol operations with Protection, Forestry, Wildlife, and Fisheries district staffs. Discuss effectiveness of methods to deter vandalism at District Coordination Team meetings. (Protection)

**Management Objective 5:** Maintain clean, safe, and user-friendly accesses for public use.

**Strategy 1:** Remove silt/debris from roads, parking lots, privies, and boat ramps; re-gravel roads and parking lots, as needed. (Forestry, Wildlife)

**Strategy 2:** As needed, maintain or restore structural integrity and safe use of boat ramps with appropriate placement of rip-rap, concrete repair, replacement of signs, etc. (Design and Development)

**Strategy 3:** Maintain attractive infrastructure to facilitate good public stewardship. (Design and Development)

**Strategy 4:** Maintain a flexible, annual maintenance schedule to match changes in seasonal needs due to flooding, drought, growing season, and public use. (Forestry, Wildlife)

## VIII. Administrative Considerations

### **Challenges and Opportunities:**

- 1) Consider land acquisition, when available.

### **Lands Proposed for Acquisition:**

When available, adjacent land may be considered for acquisition from willing sellers. Tracts that improve area access, provide public use opportunities, contain

unique natural communities and/or species of conservation concern, or meet other Department priorities, as identified in the annual Department land acquisition priorities, may be considered.

## **MANAGEMENT TIMETABLE**

All strategies for this management plan are considered ongoing.

## APPENDICES

### **Public Input Summary:**

The draft Northwest Region Grand River Accesses Management Plan was available for a public comment period March 1–31, 2017. The Missouri Department of Conservation received 10 comments from nine respondents (Appendix A). The Northwest Region Grand River Accesses Planning Team carefully reviewed and considered these ideas as they finalized this document. A brief summary of public input themes, including how they were incorporated or why they were not, can be found below. Rather than respond to each individual comment, comments are grouped into general themes and are addressed collectively.

Department responses to themes and issues identified through the Northwest Region Grand River Accesses Management Plan public comment period.

### **Suggests adding more accesses to northern Missouri rivers.**

We recognize that improved river access is needed to allow greater public use of the many recreational opportunities provided by the Grand River. Development of more and better accesses will depend on the availability of suitable sites, proximity to other public accesses, ability to improve existing accesses in a safe and cost-effective manner, maintenance needs/capabilities, and adequate funding.

Given there is only one public boat ramp (Elam Bend CA) between the Sowards Ford and Wabash Crossing accesses (~60 river miles), the Department recently evaluated the feasibility of adding ramps at current accesses in that reach of the river. This included the Andy Denton, Savage, and Green accesses. It was determined that the Green Access provides the safest and most cost-effective site for the development of a new accessible ramp meeting ADA specifications. Designs and cost estimates were made for this ramp and funding has been requested.

### **Suggests adding an Americans with Disabilities Act (ADA) accessible boat ramp and fishing area to Andy Denton Access.**

Multiple individuals commented on the need for better river access at the Andy Denton Access. We agree that the addition of an accessible boat ramp at this site would greatly increase recreational use in this stretch of the Grand River. Unfortunately, site conditions at the Andy Denton area are not conducive to the development of a safe and cost-effective boat ramp, given the entire river frontage is located on the outside of a large river bend. The potential is high for dangerous currents and excessive scour in and around a boat ramp during frequent high-flow events.

**Suggests adding a boat ramp to Andy Denton Access.**

See comments above.

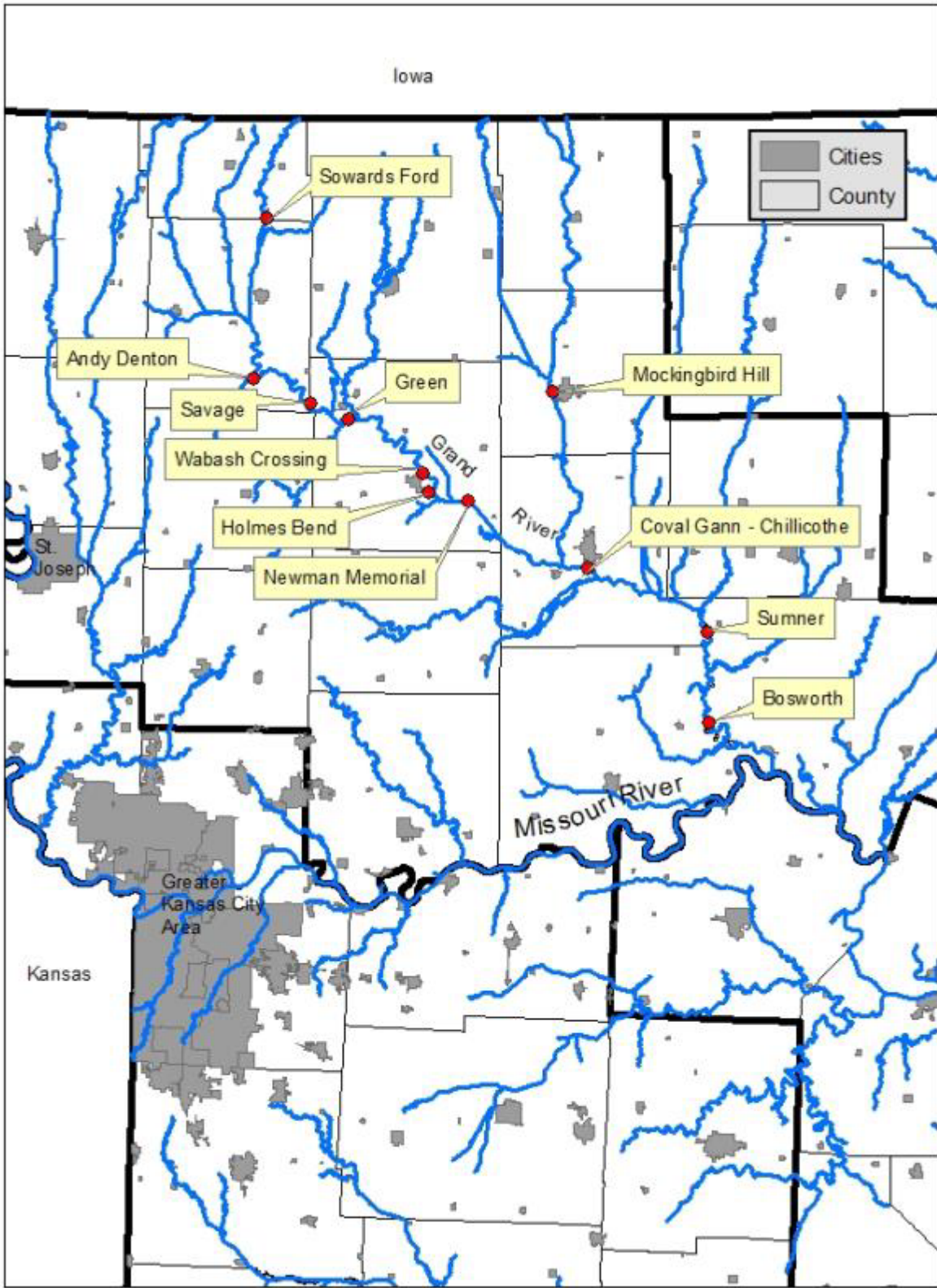
**Appendices:**

- Appendix 1. Northwest Grand River Accesses
- Appendix 2. Andy Denton Access Area Background
- Appendix 3. Map of Andy Denton Access
- Appendix 4. Land Cover Map of Andy Denton Access
- Appendix 5. Bosworth Access Area Background
- Appendix 6. Map of Bosworth Access
- Appendix 7. Coval Gann – Chillicothe Access Area Background
- Appendix 8. Map of Coval Gann – Chillicothe Access
- Appendix 9. Green Access Area Background
- Appendix 10. Map of Green Acres
- Appendix 11. Holmes Bend Access Area Background
- Appendix 12. Map of Homes Bend Access
- Appendix 13. Land Cover Map of Holmes Bend Access
- Appendix 14. Mockingbird Hill Access Area Background
- Appendix 15. Map of Mockingbird Hill Access
- Appendix 16. Newman Memorial Access Area Background
- Appendix 17. Map of Newman Memorial Access
- Appendix 18. Savage Access Area Background
- Appendix 19. Map of Savage Access
- Appendix 20. Sowards Ford Access Area Background
- Appendix 21. Map of Sowards Ford Access
- Appendix 22. Land Cover Map of Sowards Ford Access
- Appendix 23. Sumner Access Area Background
- Appendix 24. Map of Sumner Access
- Appendix 25. Wabash Crossing Access Area Background
- Appendix 26. Map of Wabash Crossing Access
- Appendix 27. Land Cover Map of Mockingbird Hill Access

**Additional Appendices:**

- Appendix A. Northwest Region Grand River Accesses Management Plan Public Comments

Appendix 1. Northwest Grand River Accesses



**Appendix 2. Andy Denton Access Area Background**

Andy Denton Access provides access to the Grand River for floating and fishing. No boat launch is present; small boats or canoes must be lowered down the river bank. The openlands are managed primarily with farming practices to provide wildlife food plots and maintain habitat diversity.

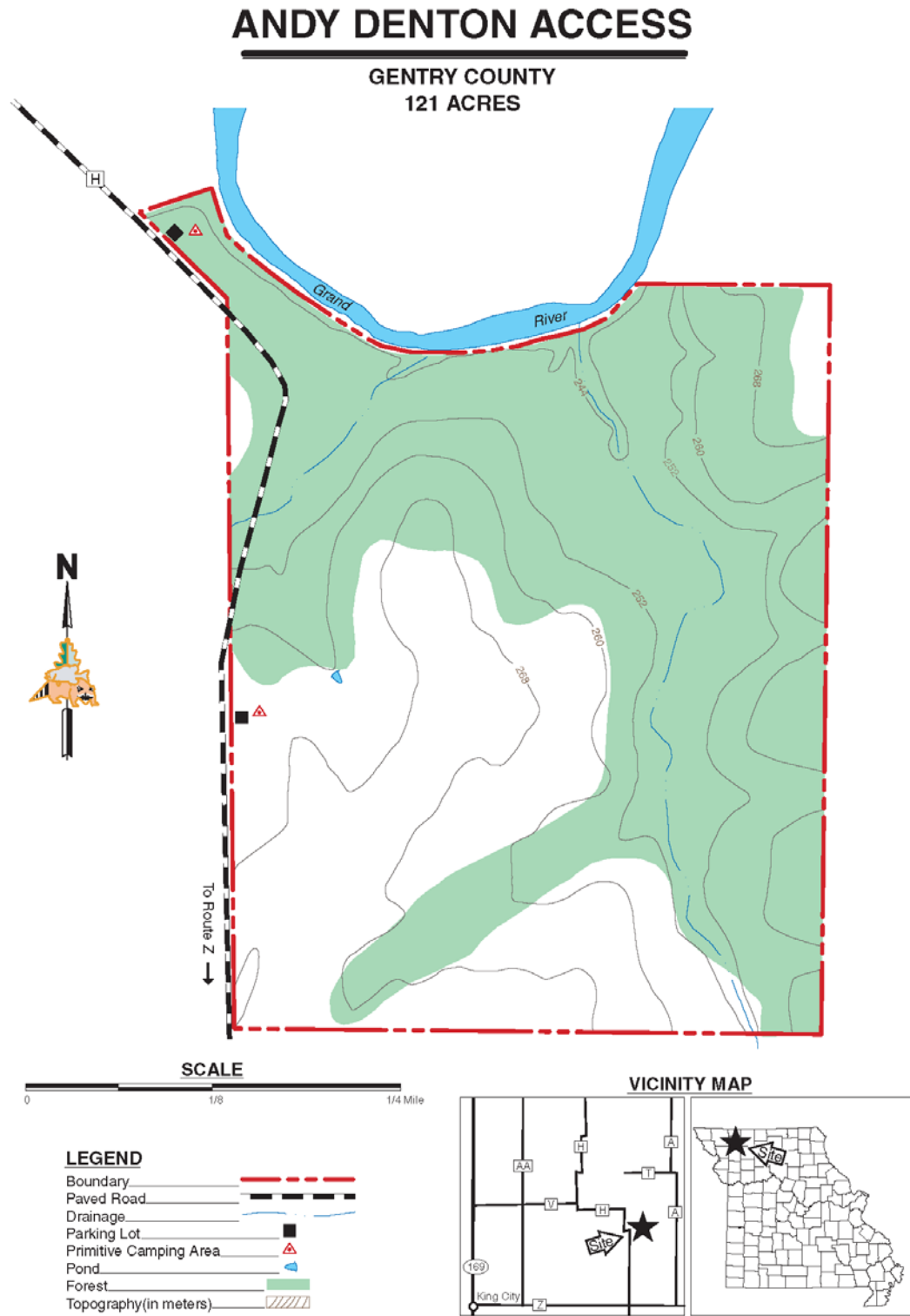
Legal Description: Township 61N, Range 31W, Section 13

Area Location: From King City, take Route Z east to Berlin, then Route H north 3 miles to area entrance.

**Current Land and Water Types:**

<b>Land/Water Type</b>	<b>Acres</b>	<b>Miles</b>	<b>% of Area</b>
Forest and Woodland	60		50
Old Field	39		32
Open Land	22		18
<b>Total</b>	<b>121</b>		<b>100</b>
Stream Frontage		0.25	

Appendix 3. Map of Andy Denton Access



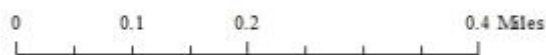


**Appendix 4. Land Cover Map of Andy Denton Access**



**Cover Type**

-  Forest
-  Boundary
-  Open Lands
-  Oldfield



**Appendix 5. Bosworth Access Area Background**

Bosworth Access is a 7-acre access in the lower reaches of the Grand River. It is a popular bank fishing and camping access. The boat ramp is one of the Department’s more heavily used accesses.

Legal Description: Township 54 North, Range 21 West, Section 21

Area Location: The access is located in Carroll County, 4 miles east of Bosworth on Route M.

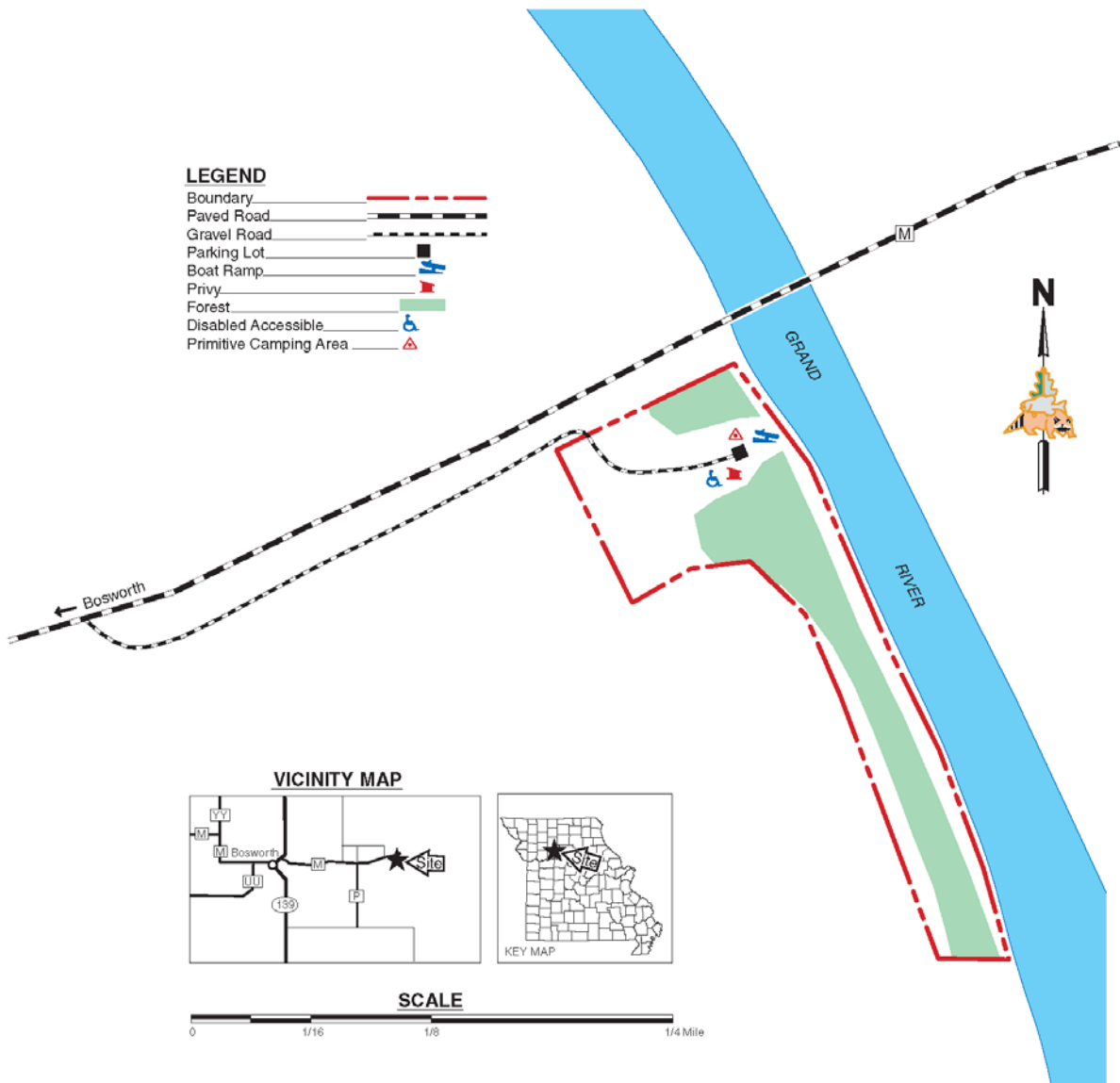
**Current Land and Water Types:**

<b>Land/Water Type</b>	<b>Acres</b>	<b>Miles</b>	<b>% of Area</b>
Old Field	4		57
Forest and Woodland	3		43
<b>Total</b>	<b>7</b>		<b>100</b>
Stream Frontage		0.2	

### Appendix 6. Map of Bosworth Access

# BOSWORTH ACCESS

CARROLL COUNTY  
7 ACRES



**Appendix 7. Coval Gann - Chillicothe Access Area Background**

Coval Gann - Chillicothe Access is a 7-acre access that is owned by the City of Chillicothe and managed under a cooperative agreement. It is a popular fishing access. The boat ramp is heavily used when the river stage is high enough to accommodate boats.

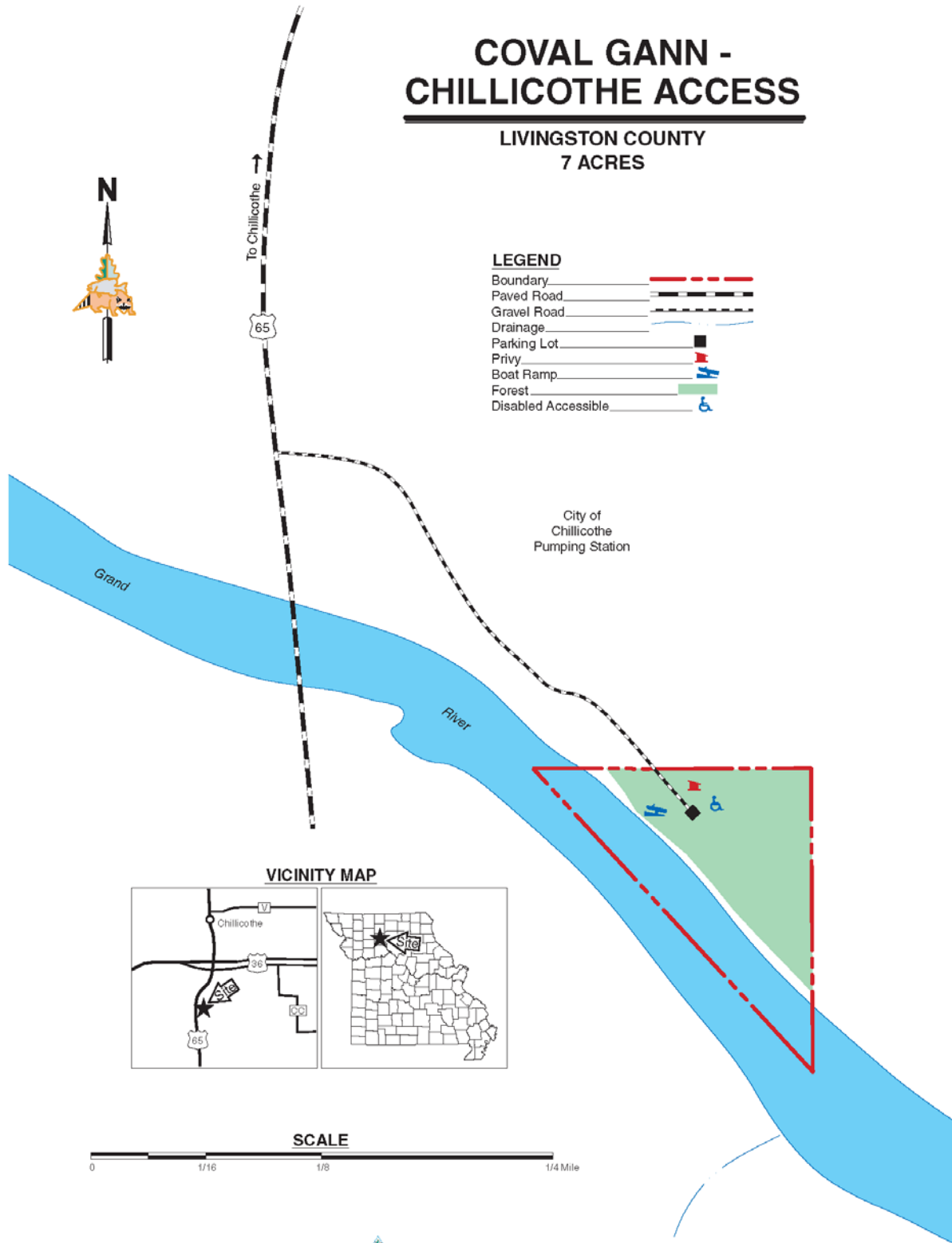
Legal Description: Township 57 North, Range 24 West, Section 13

Area Location: The access is located in Livingston County, 1.3 miles south of Chillicothe on U.S. Highway 65.

**Current Land and Water Types:**

<b>Land/Water Type</b>	<b>Acres</b>	<b>Miles</b>	<b>% of Area</b>
Forest and Woodland	6		86
Grassland	1		14
<b>Total</b>	<b>7</b>		<b>100</b>
Stream Frontage		0.2	

Appendix 8. Map of Coval Gann - Chillicothe Access



**Appendix 9. Green Access Area Background**

Green Access is located along the Grand River and just downstream of the U.S. Highway 69 bridge near Pattonsburg in Daviess County. Formerly a roadside park, the property (3.5 acres) was transferred from the Missouri Department of Transportation to the Department in 1978 upon completion of nearby Interstate 35. In 1998, 0.19 acres were transferred back to the Missouri Department of Transportation to allow for bridge repair and upgrades. Currently, the area offers fishing, frogging, birding, and gives users an opportunity to launch a boat from the bank (no ramp).

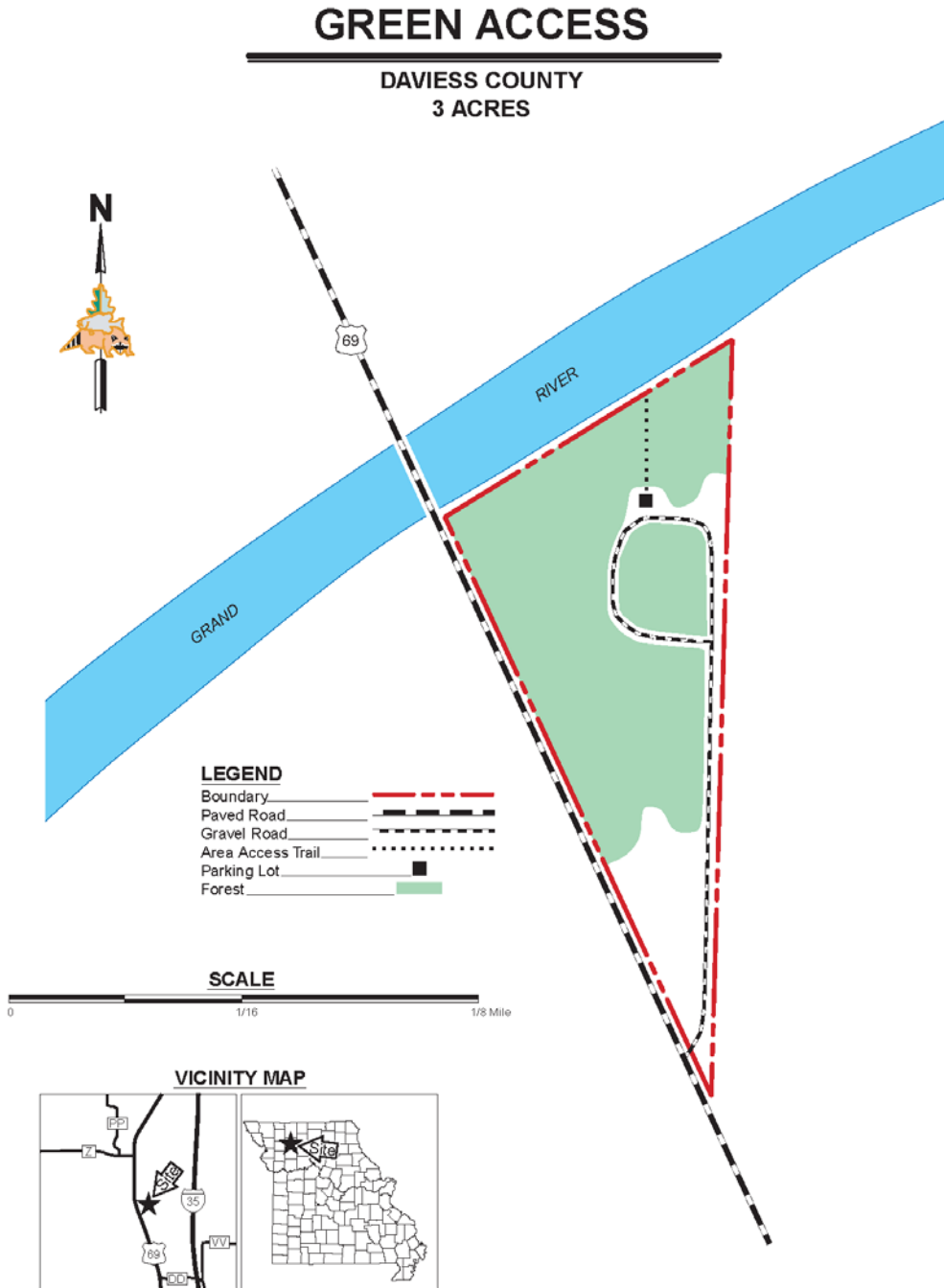
Legal Description: Township 60N, Range 29W, Section 11

Area Location: From Pattonsburg, take Highway 69 south 3 miles.

**Current Land and Water Types:**

<b>Land/Water Type</b>	<b>Acres</b>	<b>Miles</b>	<b>% of Area</b>
Grassland (non-prairie)	2		72
Forest and Woodland	1		28
<b>Total</b>	<b>3</b>		<b>100</b>
Stream Frontage		<b>0.08</b>	

### Appendix 10. Map of Green Access



**Appendix 11. Holmes Bend Access Area Background**

Holmes Bend Access is on the Grand River in Daviess County, 2 miles south of Gallatin. A 0.5-mile interior road winds through the tract, joining the uplands to the river flood plain.

Approximately 0.5 miles of the Grand River forms the eastern boundary of the area. This unchannelized portion of the river has steep, rocky banks, and deep water. Over the years this stretch of water has provided excellent fishing.

The access was named for Chester Holmes, who farmed just south of the access. The bend in the river has historically been known as Holmes Bend.

Legal Description: Township 59N, Range 27W, Sections 27 and 28

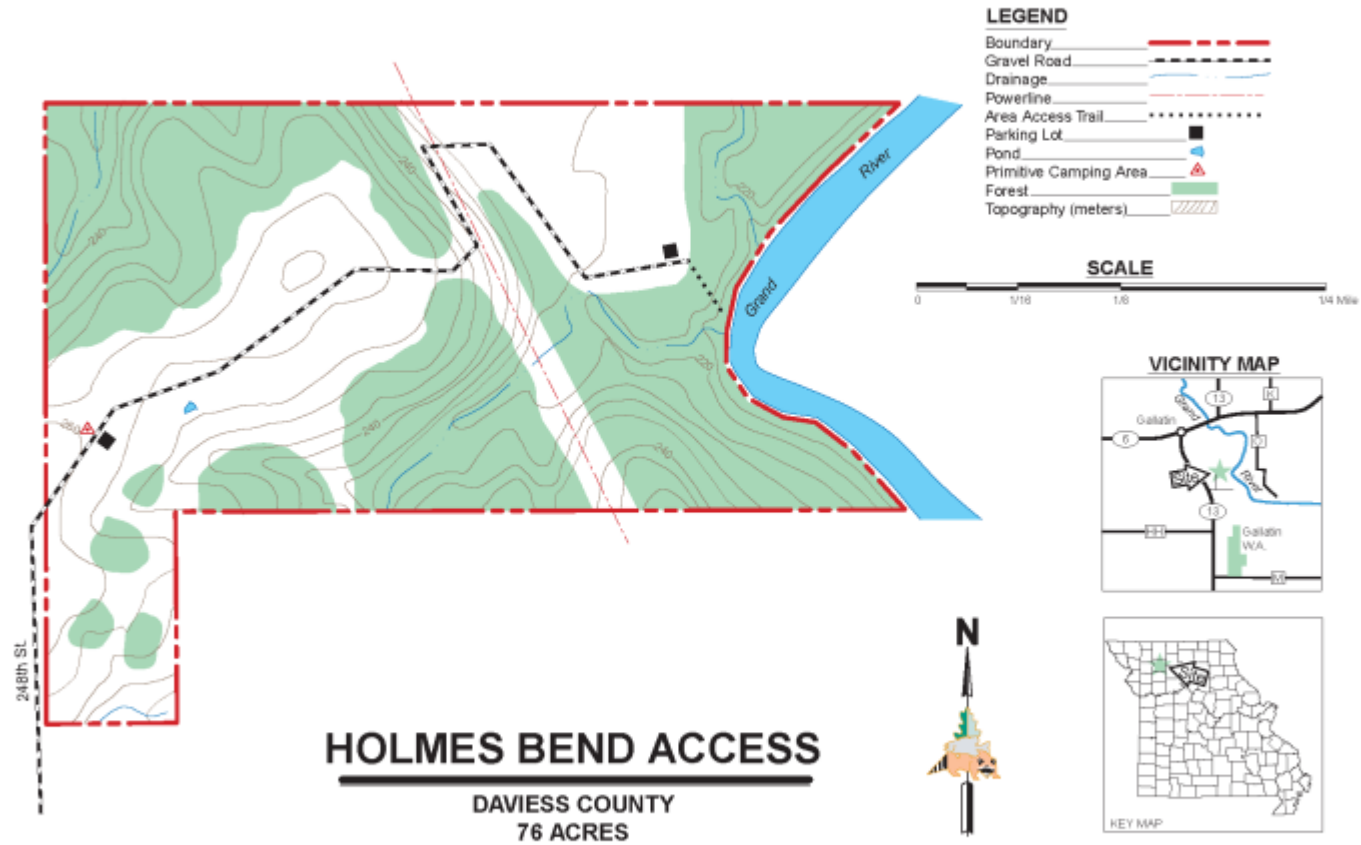
Area Location: From Gallatin, take Highway 13 south 2 miles, then Ridge Avenue east 1 mile, then 248th Street north 1 mile to area entrance.

**Current Land and Water Types:**

<b>Land/Water Type</b>	<b>Acres</b>	<b>Miles</b>	<b>% of Area</b>
Forest and Woodland	40		53
Old Field	16		21
Grassland (non-prairie)	16		21
Other (parking lots, access and mowed grass)	3		4
Lakes/Ponds	1		1
<b>Total</b>	<b>76</b>		<b>100</b>
Stream Frontage (Grand River)		0.5	



### Appendix 12. Map of Holmes Bend Access



**Appendix 13. Land Cover Map of Holmes Bend Access**



**Appendix 14. Mockingbird Hill Access Area Background**

Mockingbird Hill Access provides public access to the Thompson River. It is comprised of approximately 70 acres of forest/woodland and 10 acres of openland. The open field contains a small restored wetland.

The area name originated with a real estate agent and piano player from Atlanta, Georgia who built a small cabin on a nearby hill and named his retreat "Mockin' Bird Hill."

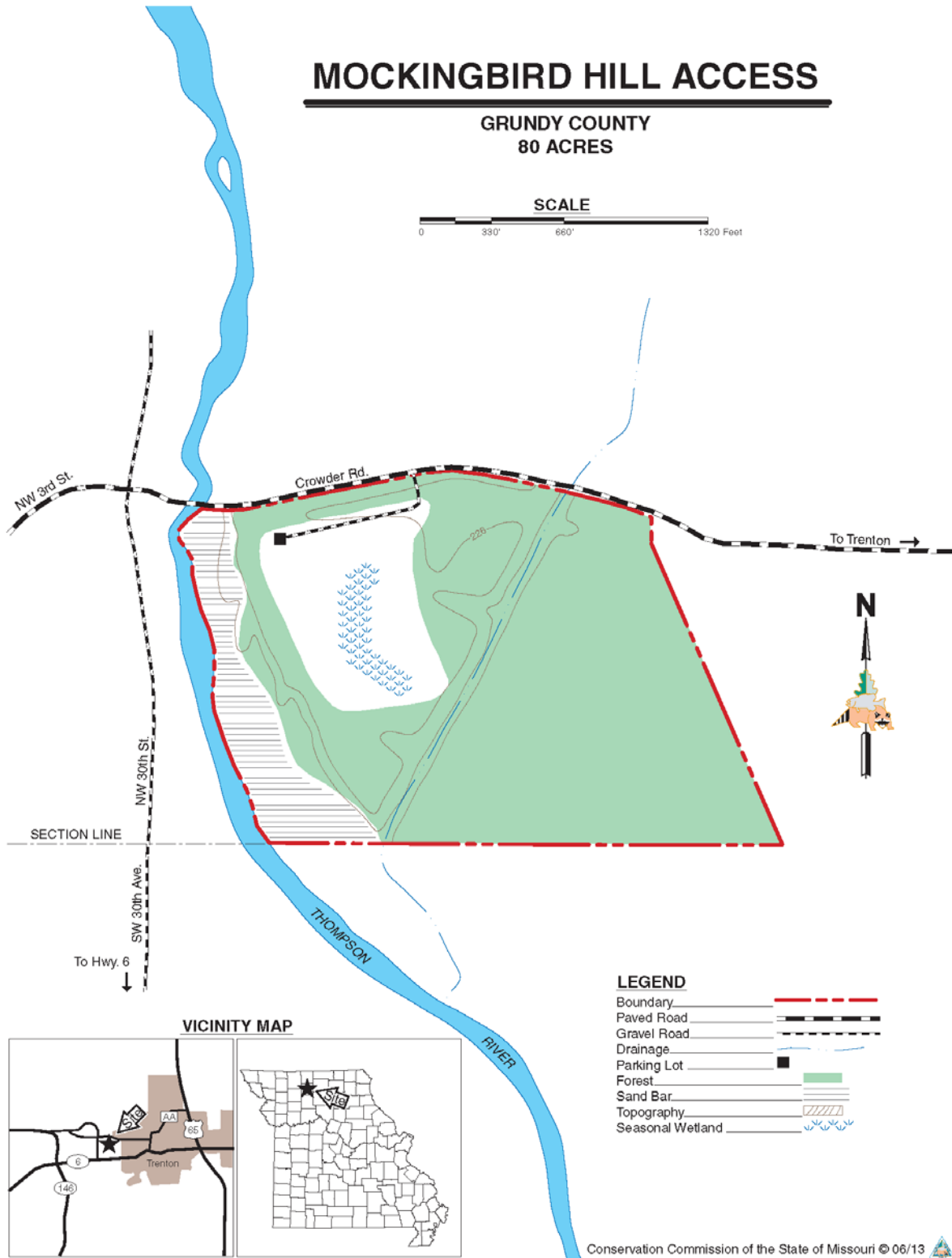
Legal Description: Township 61N, Range 24W, Section 18

Area Location: From Highway 65, take Highway 6 (Ninth Street) west through Trenton (across a railroad bridge and across Main Street), to Cedar Street. Take Cedar Street approximately five blocks north to Crowder Road (at the North Central Missouri College Campus). Take Crowder Road west approximately 1 mile to the area entrance.

**Current Land and Water Types:**

Land/Water Type	Acres	Miles	% of Area
Forest and Woodland	69		86
Old Field	9		11.5
Other (Infrastructure: parking lot, road)	2		2.5
<b>Total</b>	<b>80</b>		<b>100</b>
Stream Frontage		0.3	


**Appendix 15. Map of Mockingbird Hill Access**





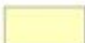

**Appendix 16. Land Cover Map of Mockingbird Hill Access**

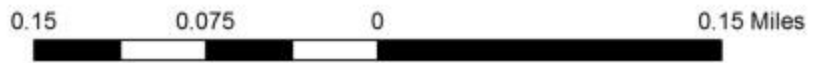


**Legend**

 Mockingbird Hill Access

**COVERTYPE**

-  FOREST
-  INFRA
-  OLDFIELD
-  WETLAND



**Appendix 17. Newman Memorial Access Area Background**

Newman Memorial Access is 9 acres and it was donated to the Department in 1981 by the Newman family. It is managed for bank fishing, and allows launching (no ramp) of small boats (e.g., canoes, kayaks, johnboats) in the Grand River. Rock jetties provide some riverbank protection and enhanced fish habitat.

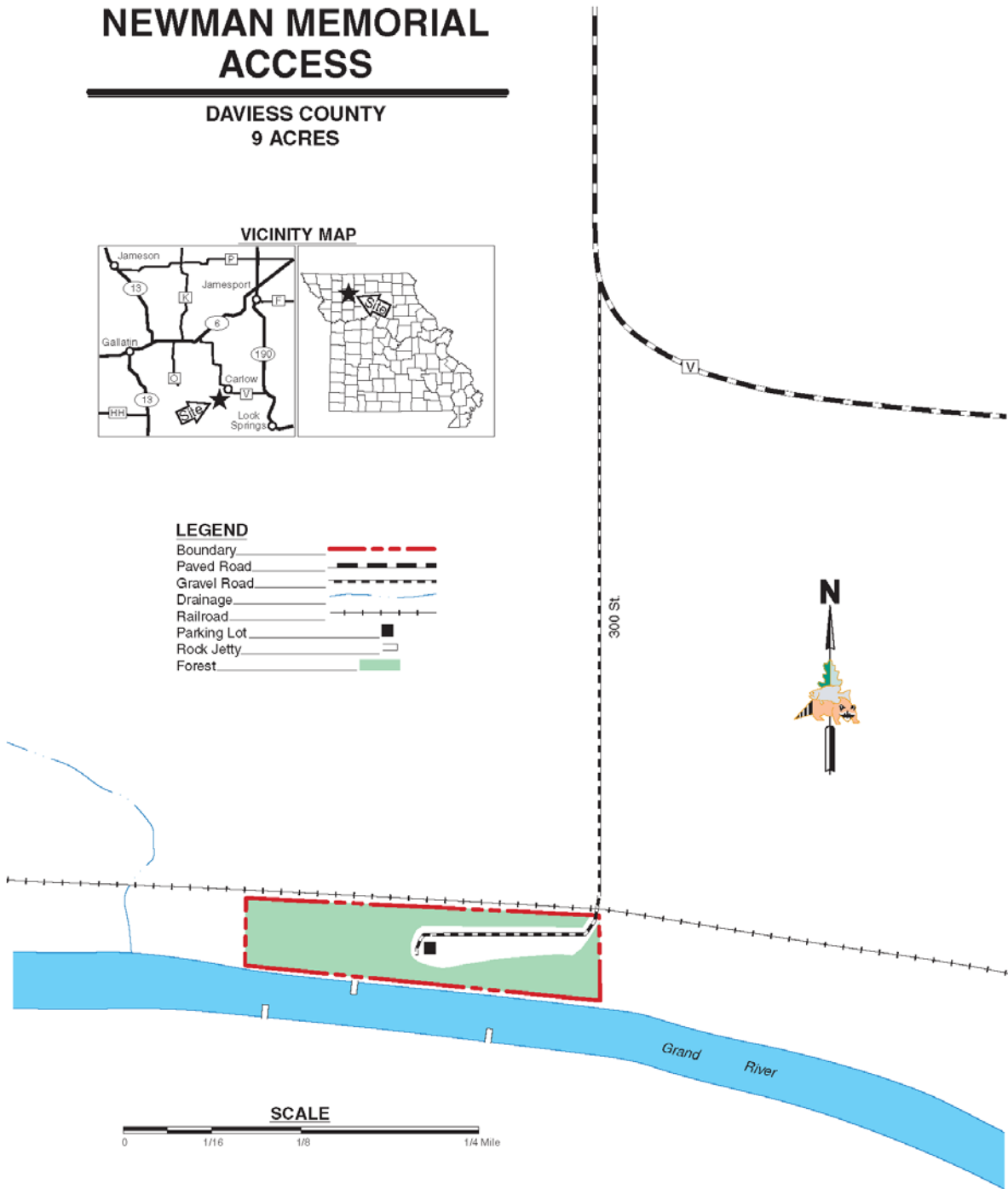
Legal Description: Township 59N, Range 26W, Section 32

Area Location: From Gallatin, take Highway 6 east 5 miles, then south on Route V 6.5 miles. A Department cantilever sign marks the access road (300 Street).

**Current Land and Water Types:**

<b>Land/Water Type</b>	<b>Acres</b>	<b>Miles</b>	<b>% of Area</b>
Forest and Woodland	4		44.5
Old Field	3		33.3
Other – Parking Lot	2		22.2
<b>Total</b>	<b>9</b>		<b>100</b>
Stream Frontage		0.25	

### Appendix 18. Map of Newman Memorial Access



**Appendix 19. Savage Access Area Background**

Savage Access is a mostly forested area that offers access to the Grand River for users near Pattonsburg, Missouri. The land was acquired from the Koger Family in 1978. Savage Access is managed as a bank fishing area and for canoe and kayak access (no ramp).

Legal Description: Township 61N, Range 29W, Section 30

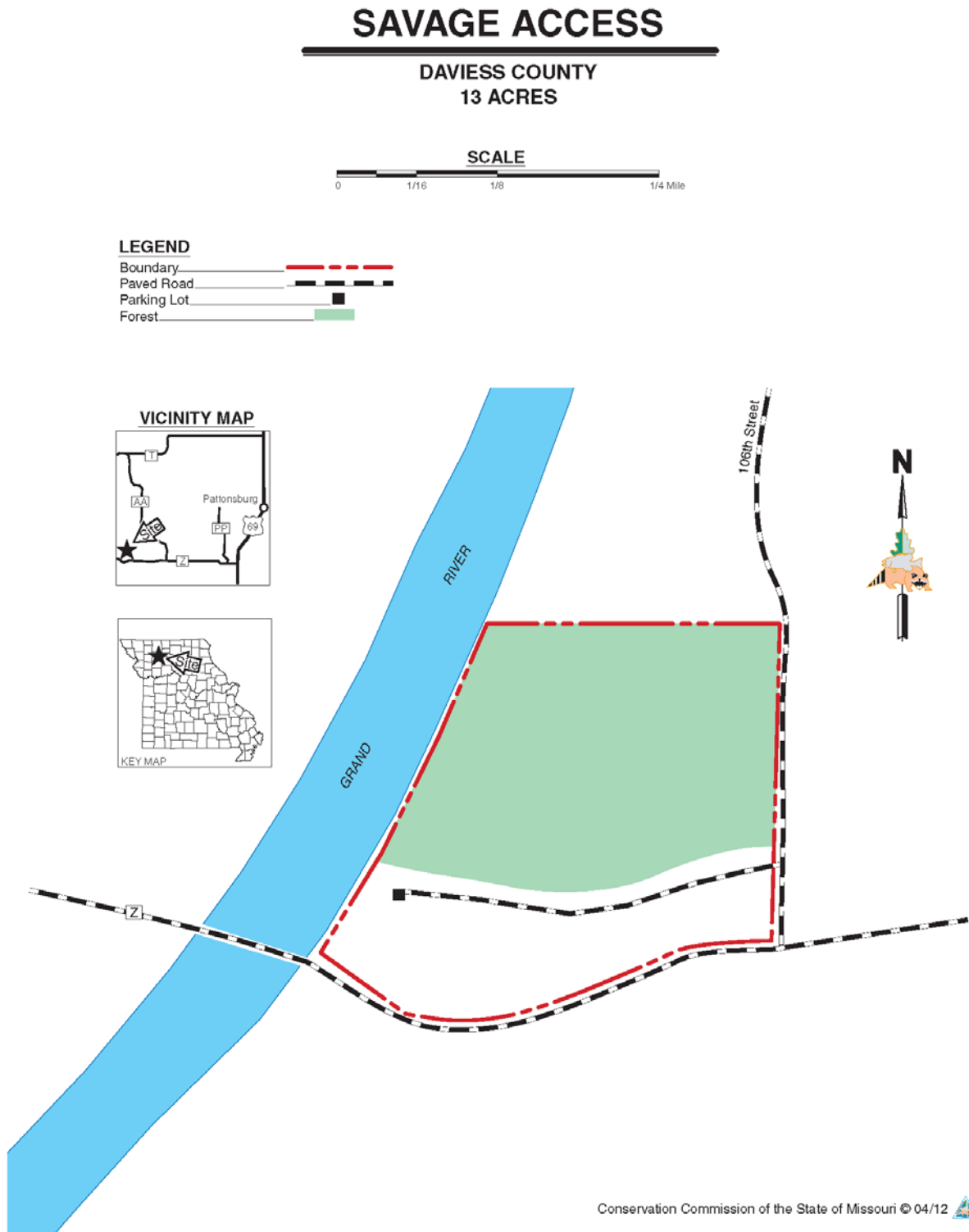
Area Location: From Pattonsburg, take Highway 69 south 2 miles, then Route Z west 3.5 miles, then 106<sup>th</sup> Street north 0.15 miles to area entrance.

**Current Land and Water Types:**

<b>Land/Water Type</b>	<b>Acres</b>	<b>Miles</b>	<b>% of Area</b>
Forest and Woodland	9		69
Grassland (non-prairie)	3		23
Other – Parking Lot	1		8
<b>Total</b>	<b>13</b>		<b>100</b>
Stream Frontage		0.20	



Appendix 20. Map of Savage Access



**Appendix 21. Sowards Ford Access Area Background**

Sowards Ford Access offers access to the East Fork of the Grand River. Primitive camping is available with 10 gravel camping pads and picnic tables.

Legal Description: Township 65N, Range 30W, Section 31

Area Location: From Denver, Missouri, take South Street (gravel) east 0.25 miles, then Quarry Avenue south 0.5 miles to the area entrance.

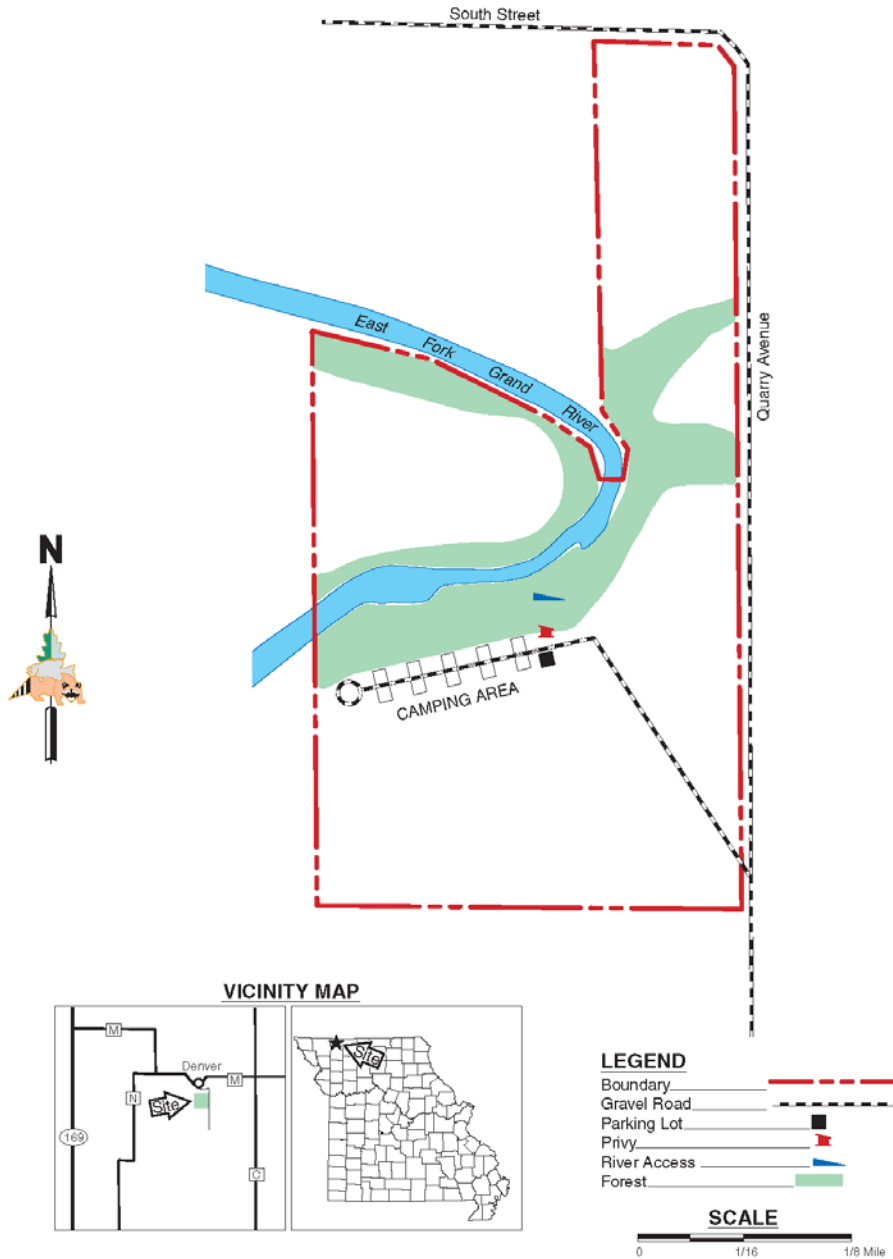
**Current Land and Water Types:**

<b>Land/Water Type</b>	<b>Acres</b>	<b>Miles</b>	<b>% of Area</b>
Forest and Woodland	46		90
Grassland (non-prairie)	5		10
<b>Total</b>	<b>51</b>		<b>100</b>
Stream Frontage		0.25	

Appendix 22. Map of Sowards Ford Access

# SOWARDS FORD ACCESS

WORTH COUNTY  
51 ACRES

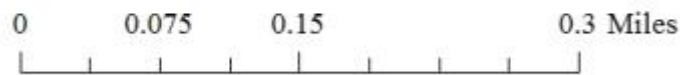


Appendix 23. Land Cover Map of Sowards Ford Access



**Cover Type**

-  Grassland
-  Forest
-  Boundary



**Appendix 24. Sumner Access Area Background**

Sumner Access is a 2-acre access along Grand River. It is a popular boat launch and bank fishing location.

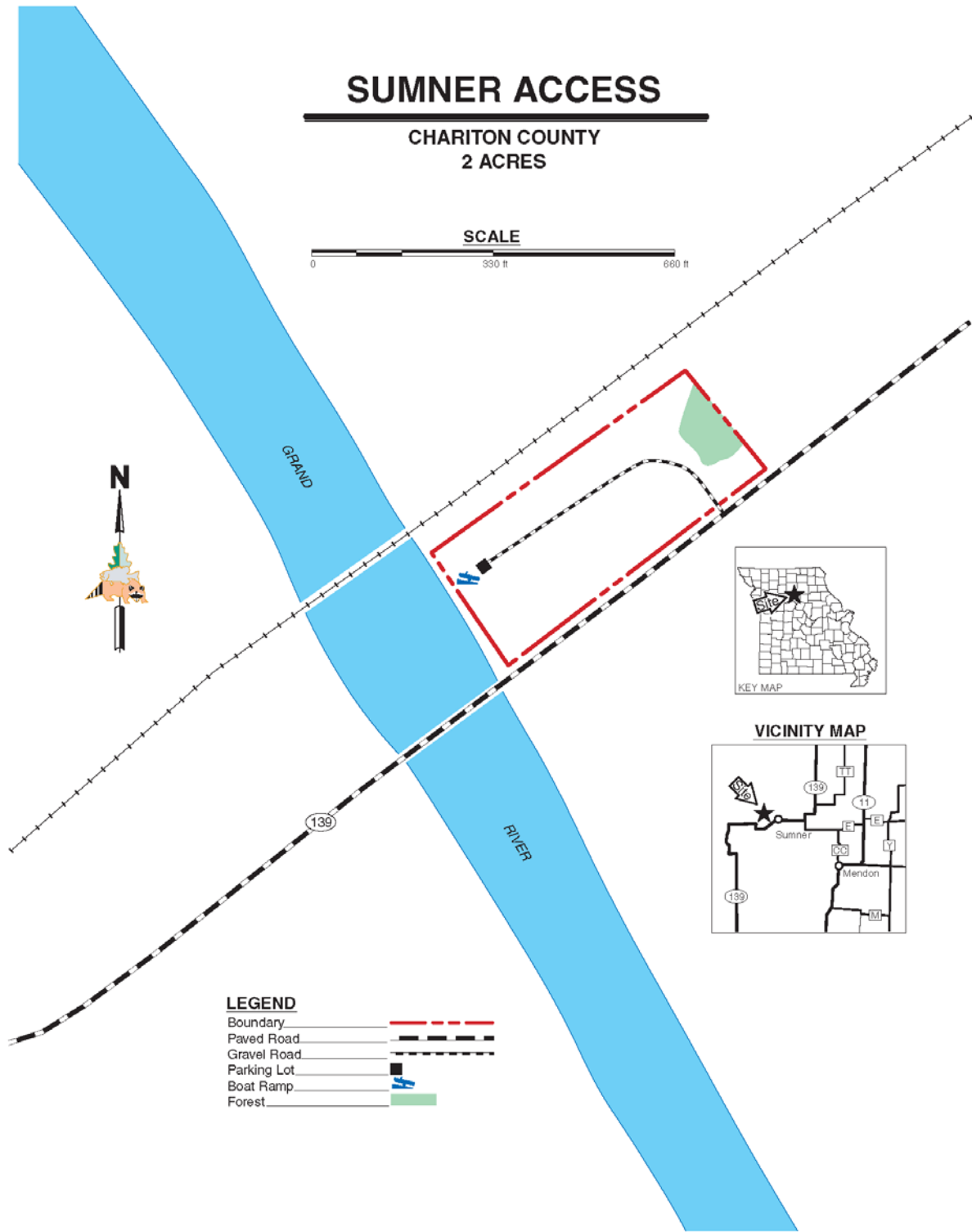
Legal Description: Township 56 North, Range 21 West, Section 19

Area Location: The access is in Chariton County, 2 miles west of Sumner on Highway 139.

**Current Land and Water Types:**

<b>Land/Water Type</b>	<b>Acres</b>	<b>Miles</b>	<b>% of Area</b>
Grassland	2		100
Stream Frontage		0.1	

Appendix 25. Map of Summer Access



**Appendix 26. Wabash Crossing Access Area Background**

Wabash Crossing Access is mostly grassland and offers access to the Grand River for users near Gallatin in Daviess County. Most of the area (8.5 acres) was purchased in 1978 for bank fishing and boat access to the river. This was combined with an earlier purchase (1975) of 6.93 acres of right-of-way from the Rock Island Railroad. Wabash Crossing has a concrete boat ramp capable of launching larger boats during periods of higher water. The area offers fishing, frogging, floating, and birding opportunities.

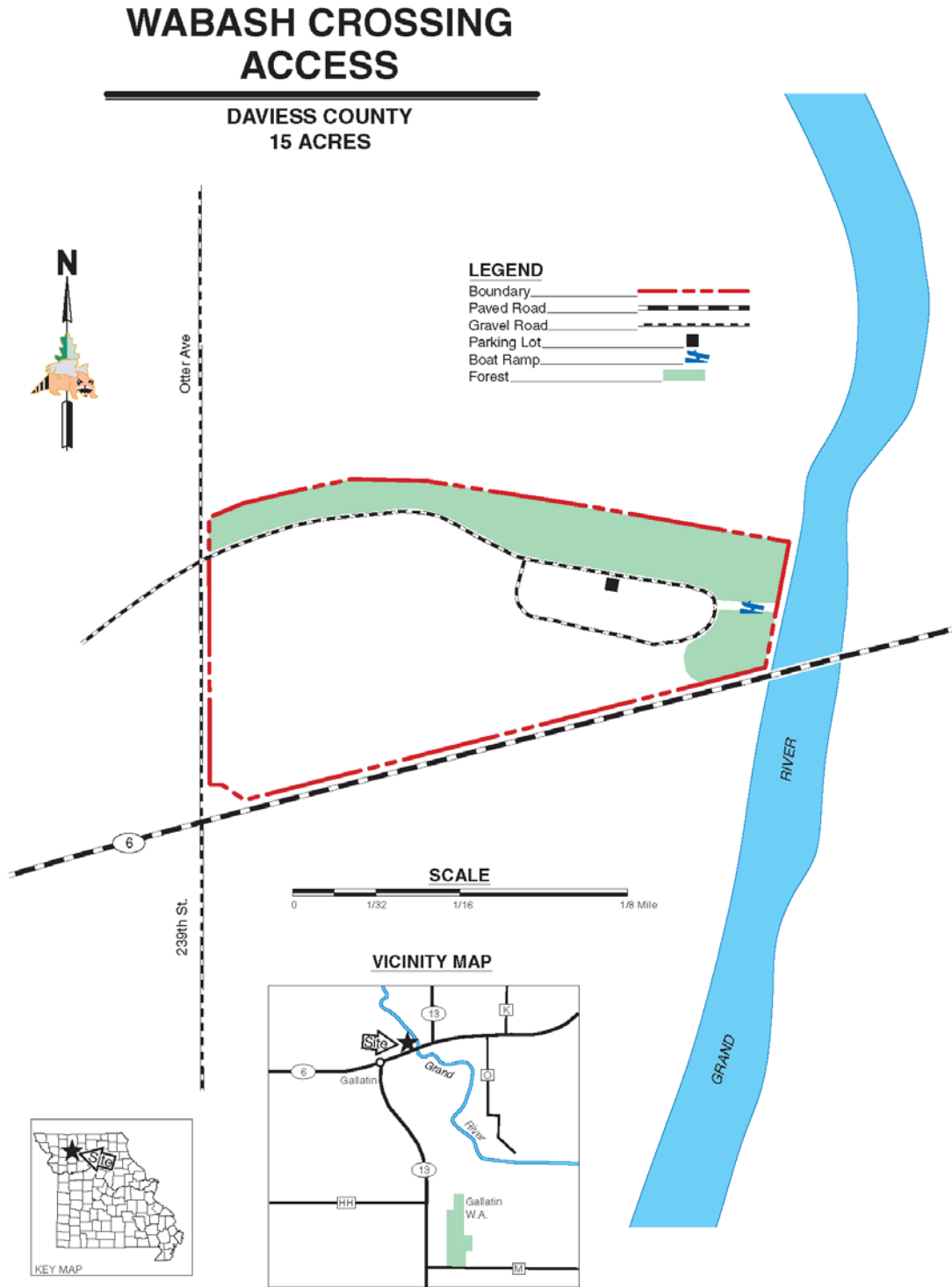
Legal Description: Township 59N, Range 27W. Section 16

Area Location: From Gallatin, take Highway 6 northeast 1 mile, then north on 239<sup>th</sup> Street 0.16 miles to area entrance.

**Current Land and Water Types:**

<b>Land/Water Type</b>	<b>Acres</b>	<b>Miles</b>	<b>% of Area</b>
Grassland (non-prairie)	11		73
Other – Roads and Parking Lot	2		13
Forest and Woodland	2		13
<b>Total</b>	<b>15</b>		<b>100</b>
Stream Frontage		0.04	

Appendix 27. Map of Wabash Crossing Access





**Appendix A. Northwest Region Grand River Accesses Management Plan Public Comments**

Received during public comment period (March 1–31, 2017):

<p><b>MORE ACCESSES NEEDED</b></p> <p>North Missouri River accesses were originally acquired at about the same distance in river miles as south Missouri Streams. North Missouri streams flow much slower, so we actually need to add a couple more accesses on the Grand River to make it usable for day trips.</p>
<p>Many people in Albany, Stanberry, King City, and all of Gentry county as well as surrounding counties use the Grand River for enjoyment of fishing, canoeing, scouting events, school events, and other activities. Although there has been much improvement in past decades of public access to the river I feel that easier accesses would be appreciated and used by many more people of our community. We have a lot of canoeing and fishing that occurs in the upper Grand, but I feel that senior citizens and those with disabilities and others are limited in these activities because of the difficulties of long walks and steep banks to get to the river. Andy Denton Access with a boat ramp and fishing area would be of great benefit and contribute greatly to the well being of seniors and those with disabilities as well as others. Our area already has limited water recreation, so I believe the addition I mentioned above would be very beneficial to the people. Thank You.</p>
<p>We need boat access at Denton Curve!</p>
<p>I would like to see the Andy Denton Public Access upgraded with a boat ramp and fishing area. People in Albany, Stanberry, King City, and all of Gentry county as well as surrounding areas use the upper Grand river for fishing, canoeing and just relaxing. We are limited in this area for water recreation. The river would be used much more if there were boat ramps and fishing areas. The banks are steep and muddy and the river is hard to get to. Senior citizens can hardly use it because of the steep banks and long walks to get to the river. Andy Denton would be perfect for float trips since the Havana boat ramp is down stream from it, with lots of fishing along the way. Please consider upgrading the Andy Denton Access. Thank you.</p>
<p>Please consider a boat ramp and fishing area for the Andy Denton Public Access to the Grand River south of Gentryville. This would be a great asset to the area for water recreation. The banks to the river are steep and muddy and it is hard access, especially for senior citizens as well as those with disabilities. Thank you for your consideration.</p>
<p>Please improve access to the Grand River at the Andy Denton turn. We need boating access!</p>
<p>Would be so useful and a great asset to the surrounding towns</p>
<p>Attention to the Andy Denton Access would be greatly appreciated. Years passed it used to be such a great River access for canoeing and such but then River changed and access was lost. There is a great interest in canoeing and being able to have river input in this area. Many individuals and families get great enjoyment from a good float or fishing outing. We hope that something can be done to maximize the potential of Andy Denton.</p>

I am an owner of land on the Grand at Gentryville. I have canoed and fished on the river for 50 years. My children want to continue that tradition. We are grateful for the Elam Bend ramp. At least one more up river would be so helpful. The river at Denton access is nearly inaccessible, especially for older folks. There are no easy access points. A boat ramp there and at the Gentryville bridge would be of great benefit to those of us who float regularly. It would encourage others to use the river. Spend a little money up here in the woods. South Missouri gets plenty! I know there is a bias against the Grand because the forks were straightened almost a hundred years ago. Its a good float. You should try it. Sorry about the mud but that's part of the experience.

I am a land owner on the Grand River in Gentry County (South of Albany). I read about your plans for Andy Denton on your website.

I wanted to express my enthusiastic support for this project. The single biggest barrier to more recreational use of the Grand River is lack of access. In most places, it is very difficult to access the river, especially with a canoe, fishing gear, etc.

Please let me know if there is anything I can do to show more support for this project.

Thank you.